

BROMELIAD SOCIETY OF SAN FRANCISCO



December 2005

NEWSLETTER

Our next meeting will be held on **Thursday, December 15, 2005** at 7:00 PM
Recreation Room, San Francisco County Fair Building, 9th Avenue at Lincoln Way, Golden Gate Park,
San Francisco

December Program

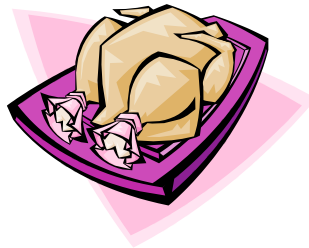
Holiday Potluck and Gift Exchange

This month culminates another year for our society. Our membership has grown a little, but we do not get to see most of these new members at our meetings. Why don't you new members try to join us for the holiday potluck? Our annual plant sale was more successful this year than last – guess the economy is getting better. Our annual trip to the member's gardens was a wonderful opportunity to see diverse collections and beautiful landscaping – culminating in a great potluck.

Note that our meeting time this month is 7 PM instead of 7:30 PM.

This month's meeting will be an opportunity for us to socialize and partake of great food. The society is providing a turkey and honey baked ham. We are asking you to bring a dish to share with the group – drinks, vegetable dish, rolls, desserts, etc. Please try to remember to bring serving silverware for the dish that you bring. We will provide plates, cups, silverware, and napkins. **Marilyn Moyer** has the list for people who signed up at our November meeting. **If you have not signed up, call Marilyn (650-365-5560) to see where you can fill in some of our gaps.**

Our club will provide a plant for each member. You may also bring a special plant/book, etc. for exchange with the other members covered in a paper bag that may or may not be decorated. The idea is to cover up the gift so as to surprise its recipient.



2005 Programs

We enjoyed a wide variety of programs this year and gained a few new members into the world of bromeliads. Because of the television and newspaper coverage of our society, many new people are learning about bromeliads. Thanks again to **Bruce McCoy** for getting this publicity for our society. Here are some highlights of our activities this year:

Unfortunately, we did not have a meeting in January. Many of our members were scattered all over the globe.

In February, **Carl Carter** had a slide show on the Bromeliads of Northern Argentina. Some of our members were on the same trip that Carl had made and it was enjoyable both for those of us who had been there as well as for our members who traveled to Argentina vicariously through the slides.

We visited Chicago in March when **Roger Lane** provided a slide show of WBC 2004 that included the plant show and a visit to the Lincoln Park Conservatory, the Field Museum (with a behind-the-scenes visit to their herbarium), and the Garfield Park Conservatory.

In April we were fortunate to have **Betty Patterson** visit us from Dallas, Texas. She provided a Power Point presentation of the bromeliads, native peoples, and villages of the páramos region of Ecuador.

Carl Carter was our May speaker. He provided a slide show on a recent trip that he and **Bruce McCoy** took to Costa Rica. We were treated to many beautiful *Tillandsia biflora* and many *Werauhia* species as well as orchids that Carl and many of our other members enjoy.

In June, **Dan Arcos** organized a Bromeliad Basics tutorial to introduce new bromeliad fanciers how to grow bromeliads. Dan provided a slide show on the bromeliad family, **Tom Koerber** showed how to mount bromeliads, and **Lupe Cota** did a potting demonstration.

In July, **Bruce McCoy** reprised the trip that he and **Carl** had taken to the high altitude portions of Costa Rica. In addition to the wonderful digital slide show, Bruce brought in many of the colorful plants he had collected.

Our August program was a visit to many beautiful gardens in the East Bay followed by a pot luck dinner. Thanks to **David Feix** and **Dan Arcos** for organizing the tour and the people who opened their gardens for our enjoyment. **Casper Curto** and **Daryl Ducharme** and **David Feix** were members whose gardens were on the tour.

In September, **Wendell "Woody" Minnich** from southern California was our speaker. While on a trip to Brazil seeking certain cacti he discovered many bromeliads. His superb slide show introduced us to many bromeliads from Brazil that we were not able to identify concretely.

Roger Lane provided a digital slide show of Unusual Bromeliad Genera in October. The show included plants that are plain and of little interest to the hobbyist, plants that are difficult to grow outside of their native environment, and plants that are too large to devote to a hobbyist's collection.

In November, **Thomas Vincze** gave us a slide show on his visit to Florida bromeliad nurseries. The show predominately covered plants at Tropiflora, but that was a lot because Tropiflora is probably the largest commercial nursery in the country for bromeliad collectors.



Androlepis skinneri, one of the bromeliads that most of us do not grow. Photo is courtesy of Florida Council of Bromeliad Societies.

Slate of Officers and Directors for 2006

At this month's meeting we will have nomination of officers and board of directors for next year.

2006 Application and Membership Renewal

Yes, it's that time again. The dues are \$15 for single member and \$20 for a dual membership. the annual dues from \$12 to \$15. Please pay at the meeting or by mail to Harold Chams.

World Bromeliad Conference

Do not forget the World Bromeliad Conference which will be in San Diego next June. The dates for the conference are **June 6-11** and the registration cost is \$165 through April 30 2006 for BSI members; cost for non-BSI members is \$195. After May 1, the rates go up to \$200 for BSI members and \$230 for non-BSI members. **SO DO NOT DELAY!**

The current lineup of speakers is excellent and that is only part of the activities that you can participate in. The general seminars comprise travelogues (Peter Wan will be one of the speakers), talks about hybridizing, and other topics yet to be determined. The technical seminars will cover the upcoming revision of the tillandsia genus and several botanists and taxonomists will participate in this discussion.

When we hosted the San Francisco WBC in 2000, many members from southern California helped us out and brought plants for the plant show. It is now our turn to help them out. Start setting aside some of your best plants to enter in the show.

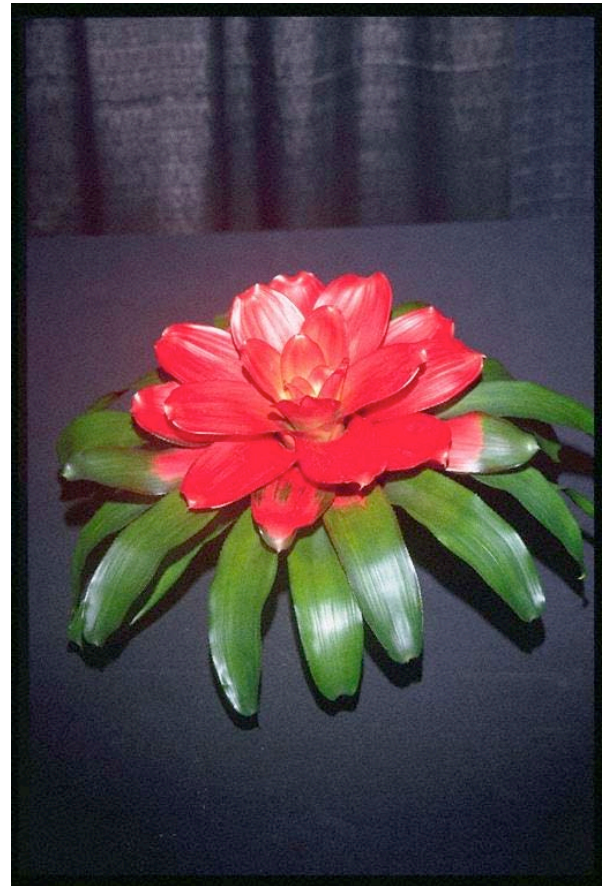
To register for the conference, go to the BSI website (www.bsi.org) and follow the instructions.

Rosetting – Neoregelia King's Ransom and Medallion

This article by Lynn Hudson from Australia is taken from the August 2002 POTPOURRI, newsletter of the Greater New Orleans Bromeliad Society.

Most of you have seen these beautiful plants when they form a central cup of upright leaves instead of flowering. Medallion is the darker plant with a rosette of cardinal red while King's Ransom has a crimson rosette. Some invisible magician then visits and paints a perfect darker line around the edges of the rosette leaves.

After looking just beautiful and eliciting wonderment from all who behold this magnificence, the plants then produce more green leaves from the center and here in the wet tropics, they usually repeat the resetting process.



Neoregelia King's Ransom photo by Christopher Krumrey is courtesy of the Florida Council of Bromeliad Societies.

Why? No one can give an answer. I have had every plant rosette at least once and I am the subject of envy by southern growers. It is nothing I do to them; they just do it. The only answer I

can give is our humidity – we can certainly do with some payback for the foul heat and humidity in which we try to live!

I have found King's Ransom will do it at least once, whereas Medallion just keeps doing it until she has a very long caudex which needs support. This stem was over a foot long on my original plant and during our hot dry weather it rotted through. I cut it off, repotted the top and now she is resetting again. There is no secret I know of to make them rosette – there is not a better or 'true' plant.

While this plant is working hard to rosette, she is not producing pups – you cannot have everything! There is an article in the *Journal of the Bromeliad Society* 37 #2, p72 of how others have grown Medallion. I considered cutting the resetting plant from the top of the caudex to initiate the pup eyes I could see, but Mother Nature took over, maybe next time. I have found King's Ransom will give a pup or two while she is resetting. I just wish they would rosette for the Cairns Show. In disgust at the lack of rosettes, Our Grace has sent me pups of both plants and they have rosetted even though she cursed them! It has to be our climate.

I have had Kathleen rosette once. Blushing Bride and Passion have also rosetted but not to the extent of either King's Ransom or Medallion. [Blushing Bride was cultivated from a *macrosepala* hybrid by Mulford Foster and was a wedding gift for his son Bert. Passion is a Grant Groves cultivar of Blushing Bride and *johannis*.]

This article by Tom Wolfe appeared in the June 1996 newsletter of the Bromeliad Guild of Tampa Bay, Inc.

This plant was named in honor of Mrs. Racine Foster, wife of Mulford Foster. They found it growing in the rain forests of Espirito Santo Brazil in 1939.

It is a small species 14 to 24 inches (40 to 60 cm) and the leaves are approximately one inch (0.39cm) wide. It is often called "The Christmas Jewel" since it blooms from December through February and lasts for many months. It forms a small rosette with soft, glossy, green leaves. It has a simple pendant inflorescence. Suspended on a pendulous stem the flowers resemble orange-red berries with yellow flower petals that later turn into a cherry-red fruit.

This is definitely a hanging basket plant or it can be mounted on cork bark or driftwood.

It should be grown in diffused light or filtered light as under a large oak tree.

There is a variety *tubiformis* that is much more tubular (as you may have guessed) which resembles a *Billbergia*. The inflorescence is even more pendant and the foliage is a light green. There is also a variety *erecta* which has an erect and shorter inflorescence.

<p><i>Aechmea racinae</i> Also known as The Christmas Jewel</p>



This is the *Aechmea racinae* flower spike. Photo is by Derek Butcher and courtesy of the Florida Council of Bromeliad Societies.

Tip of the Month

This article by is taken from the May 1997 CALOOSAHATCHEE MERISTEM, newsletter of the Caloosahatchee Bromeliad Society.

Got a pot that's top heavy? Not time to repot into a larger pot right now? Just stand the plant (pot and all) inside a clay pot with a slightly larger diameter. This will keep the plant from tipping over until you get around to repotting it. Also remember, squatty pots are best for bromeliads. If you use plastic pots, the azalea type provides a low center of gravity and plenty of drainage. In clay pots, the slotted type which is used for orchids would be the best choice. Pieces of broken clay pots in the bottom of a plastic pot are another way to add stability to your plants.

Chatahoochee rock is also excellent for this purpose and the plants will not react adversely to its presence.

To clean and sterilize pots for re-use, soak them overnight in Clorox (or other liquid bleach) and water. One half cup bleach to one gallon of water will kill algae, fungus, mold, and bacteria. If you use this procedure on clay pots, you should soak them in plain water afterward. Plastic ones should also be rinsed.

If you like to keep the larger bromeliads in containers on your patio but hate to drag around those heavy pots, then this tip could be helpful to you. Instead of throwing out all those Styrofoam peanuts you get as packing materials, use them to fillo the bottom of your larger pots. Actually you could replace up to one-half of the soil mix with the peanuts. Not only will it make the potted plant much lighter but the packing will provide drainage and help save our environment.

Fascicularias

This is an e-mail message from Harold Charns. If you are interested, call Harold at 415-861-6043 or r-mail him at Harold@States-Street.com.

I have been contacted by a woman near City College. She is having the lot next to her house cleared for construction and has a whole bunch of Fascicularias available (none in flower so I can't tell which species).

If anyone is interested in one or more, let me know and we'll work out a way for you to get as many as you'd like (you can pick them up, or I can and bring them to a meeting).

BROMELIAD SOCIETY OF SAN FRANCISCO (BSSF)

The BSSF is a non-profit educational organization promoting the study and cultivation of bromeliads. The BSSF meets monthly on the 3rd Thursday at 7:30 PM in the Recreation room of the San Francisco County Fair Building, 9th Avenue at Lincoln Way, Golden Gate Park, San Francisco. Meetings feature educational lectures and displays of plants. Go to the affiliate section of the BSI webpage for information about our meetings.

The BSSF publishes a monthly newsletter that comes with the membership. Annual dues are single (\$15), dual (\$20). To join the BSSF, mail your name(s), address, telephone number, e-mail address, and check made payable to the BSSF to:

Harold Charns, BSSF Treasurer, 255 States Street, San Francisco, CA 94114-1405.

BSSF 2005 OFFICERS & DIRECTORS

PRESIDENT	Carl Carter	510-661-0568	carl.carter@ekit.com
VICE PRESIDENT	Bruce McCoy	510-835-3311	bruce.mccoy@gmail.com
SECRETARY	Dorothy Dewing	650-856-1441	
TREASURER	Harold Charns	415-861-6043	Harold@States-Street.com
DIRECTORS:	Keith Anderson	650-529-1278	e2keith@comcast.net
	Roger Lane	650-949-4831	rdodger@pacbell.net
	Marilyn Moyer	650-365-5560	MarilynMoyer@comcast.net
	Peder Samuelsen	650-365-5560	Pedersam@comcast.net
	Peter Wan	408-605-2637	peterkwan@earthlink.net

BROMELIAD SOCIETY INTERNATIONAL

The Journal is published bimonthly at Orlando, Florida by the Bromeliad Society International. Subscription price (in U.S. \$) is included in the 12-month membership dues: single (\$28.), dual (2 members at one address receiving one Journal -\$30). Address all membership and subscription correspondence to: Membership Secretary, John Atlee, 1608 Cardenas Drive NE, Albuquerque, NM 87110-6628

BROMELIAD SOCIETY
OF
SAN FRANCISCO

Roger Lane
Newsletter Editor
551 Hawthorne Court
Los Altos, CA 94024-3121

Happy Holidays!
